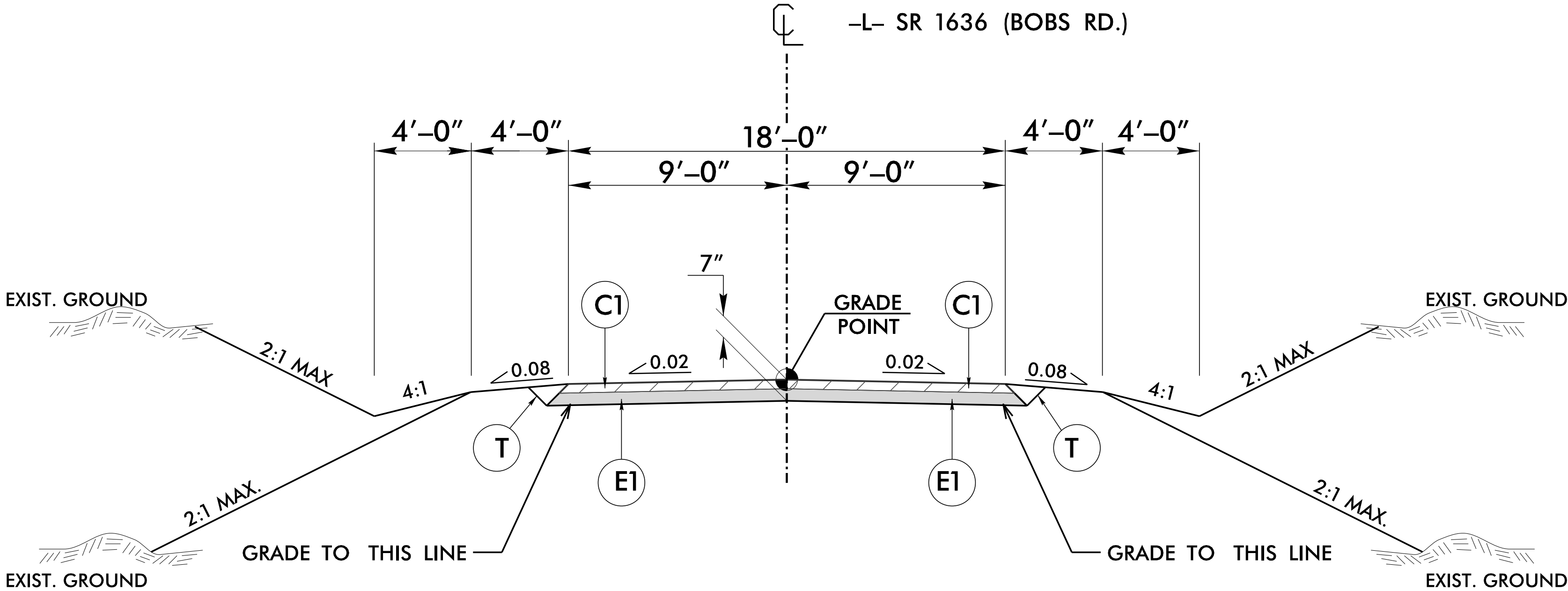


PAVEMENT SCHEDULE (FINAL)	
C1	PROP. APPROX. 3" ASPHALT CONCRETE SURFACE COURSE, TYPE S9.5C, AT AN AVERAGE RATE OF 168 LBS. PER SQ. YD. IN EACH OF TWO LAYERS.
C2	PROP. VAR. DEPTH ASPHALT CONCRETE SURFACE COURSE, TYPE S9.5C, AT AN AVERAGE RATE OF 112 LBS. PER SQ. YD. PER 1" DEPTH, TO BE PLACED IN LAYERS NOT TO EXCEED 1½" IN DEPTH.
E1	PROP. APPROX. 4" ASPHALT CONCRETE BASE COURSE, TYPE B25.0C, AT AN AVERAGE RATE OF 456 LBS. PER SQ. YD.
T	EARTH MATERIAL.

NOTE: PAVEMENT EDGE SLOPES ARE 1:1 UNLESS SHOWN OTHERWISE.



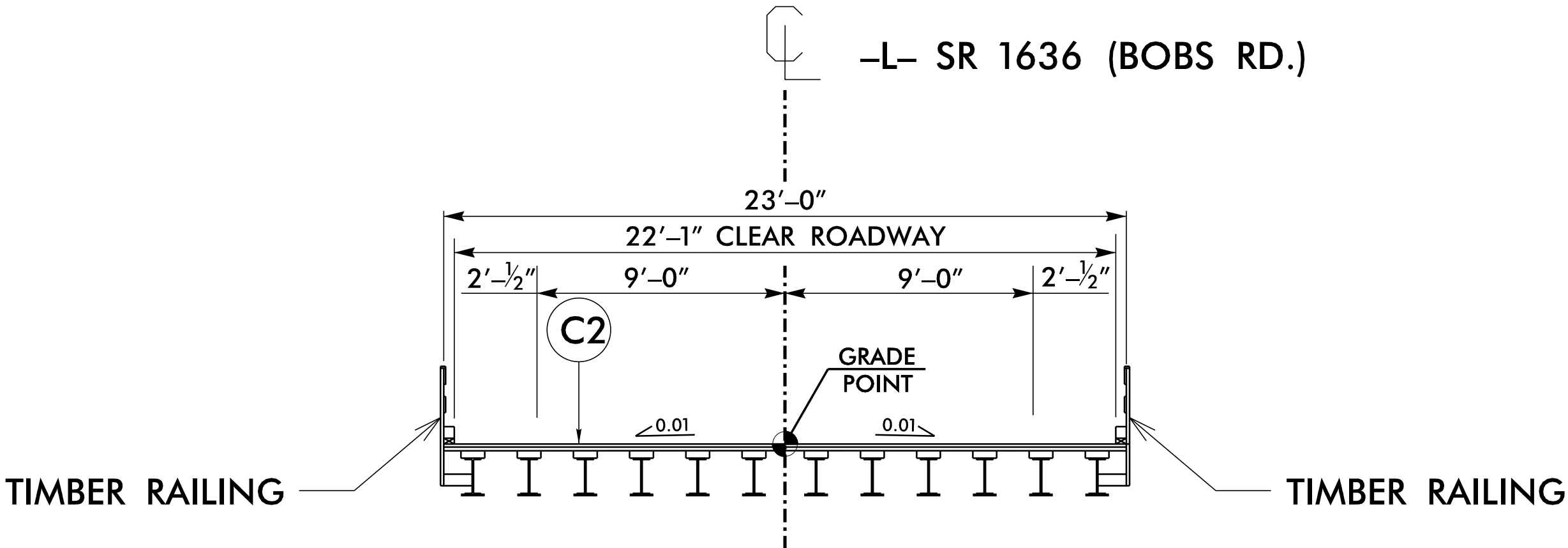
TYPICAL SECTION NO. 1

USE TYPICAL SECTION NO.1

- L- STA. 10 + 80.00 TO -L- STA. 11 + 46.25 (BEGIN BRIDGE)
- L- STA. 11 + 88.75 (END BRIDGE) TO -L- STA. 12 + 35.00

NOTE: TRANSITION BETWEEN EXISTING AND TYP. SECT. NO. 1 AS FOLLOWS:

- L- STA. 10 + 55.00 TO -L- STA. 10 + 80.00
- L- STA. 12 + 35.00 TO -L- STA. 12 + 60.00



TYPICAL SECTION NO. 2

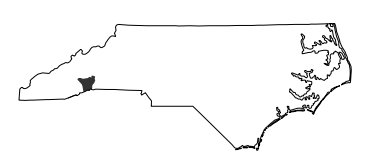
USE TYPICAL SECTION NO.2

- L- STA. 11 + 46.25 TO -L- STA. 11 + 88.75

DF18314.2045324

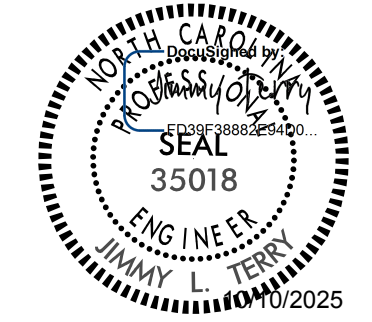
3RDI 2A-1

NORTH CAROLINA
DEPARTMENT OF TRANSPORTATION
HENDERSON COUNTY



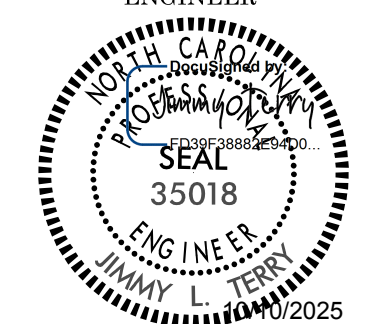
ROADWAY DESIGN UNIT

ROADWAY DESIGN
ENGINEER



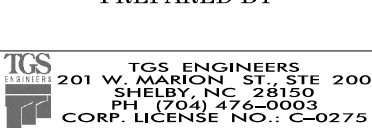
DOCUMENT NOT CONSIDERED FINAL
UNLESS ALL SIGNATURES COMPLETED

PAVEMENT DESIGN
ENGINEER



DOCUMENT NOT CONSIDERED FINAL
UNLESS ALL SIGNATURES COMPLETED

PREPARED BY



REVISIONS